



INSTALLATION MANUAL OF LK60/63 BASE PROFILES  
STEELPRO LTD



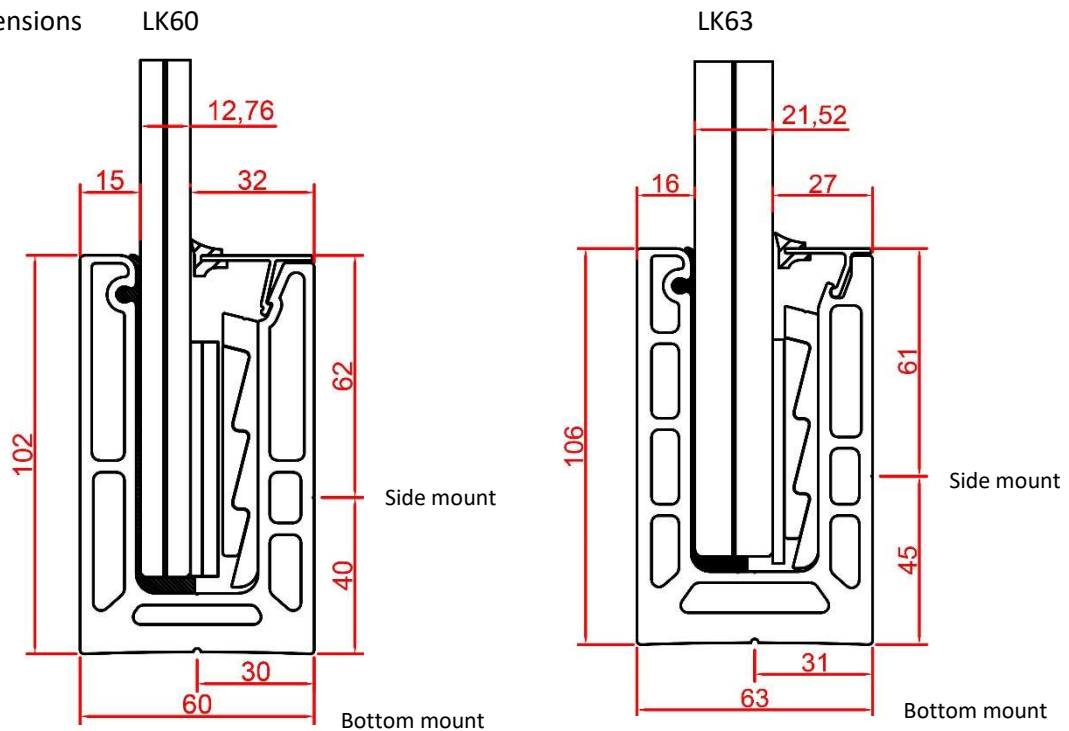
**We recommend using ETA approved Steelpro ML280 resin for anchoring of LK-profiles.**

Steelpro ML280 is suitable for use on cracked and uncracked concrete.

ETA approval mark VMK-SFZ ETA-15/0858+ETA-16/0808. Styrene free.

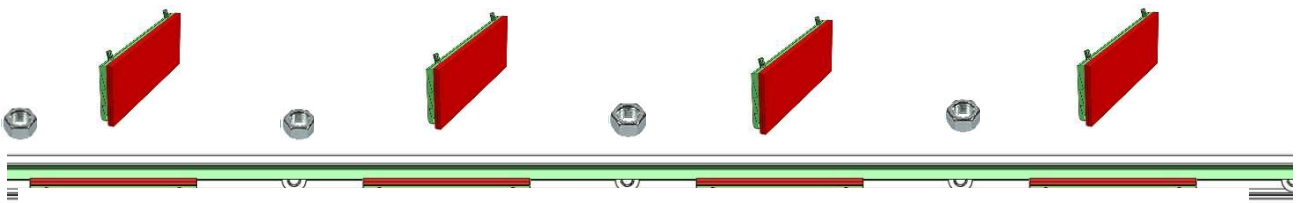
For fitting the LK 60/63 profiles onto uneven surface straightening pieces are used. Both side and bottom mount can be also done with the help of the LK adjustable brackets. You only need level and basic tools for mounting. It is of high importance, that the profile channel is professionally and firmly enough anchored to the attachment surface.

Profile dimensions



**Glass thickness range for LK60 (1 kN)**  
12mm – 19.52 mm

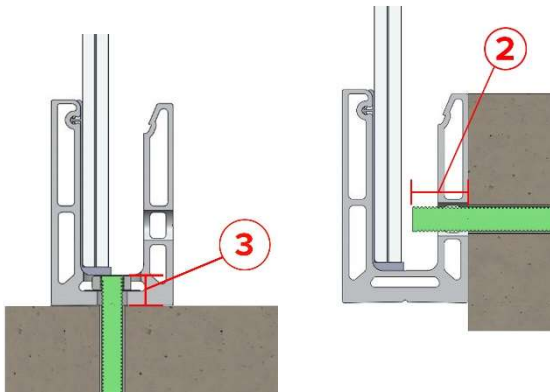
**Glass thickness range for LK63 (2-3 kN)**  
16.76mm-21.52mm



LK60 interval between fixing bolts ca 400mm

LK63 interval between fixing bolts 300mm

There is always one wedge between two fixing bolts in both mount types



Fixing distance from the anchor to the edge of the concrete depends on the load class

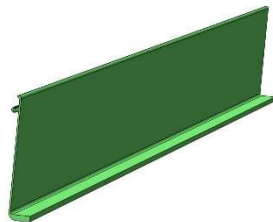
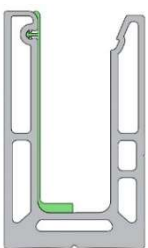
LK60		Side mount	
1) Glass thickness		2) Max threaded rod length	
6+6mm		28mm	
8+8mm		24mm	

LK63		Side mount	
1) Glass thickness		2) Max threaded rod length	
8+8mm		27mm	
10+8mm		25mm	

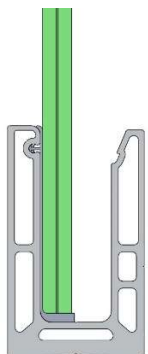
LK60		Bottom mount	
Glass thickness		3) Max threaded rod length	
All		15mm	

LK63		Bottom mount	
Glass thickness		3) Max threaded rod length	
All		19mm	

To ensure sturdiness of the anchor, its distance to edge must be in accordance with the load class. In each case responsible structural engineer specifies the distance between the anchor/threaded bar and concrete edge according to the load class.



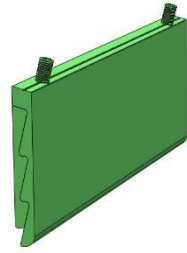
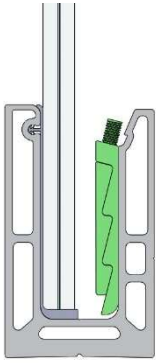
1. Place the frame seal into the groove in the profile



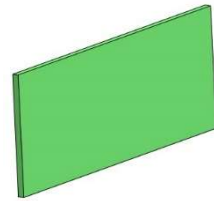
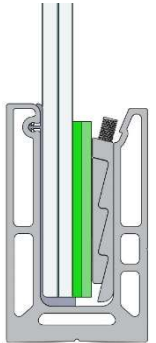
For safety reasons we recommend using toughened laminated glass.

2. Place the glass pane against the frame rubber seal





3. Insert the wedge into the groove in the profile. Make sure, that the inner surfaces of the profile are clean.



4. Insert the wedge plastics between glass and wedge

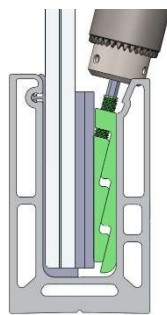
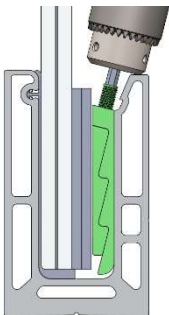
**Thicknesses of wedge plastics**

**LK60**

- 12mm glass, 8 mm (4+4)
- 12.76mm glass, 7 mm (4+3)
- 13.52mm glass, 6 mm (3+3)
- 16.76mm glass, 3 mm
- 17.52mm glass, 2 mm
- 19.52mm glass, 1 mm

**LK63**

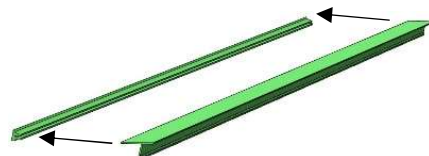
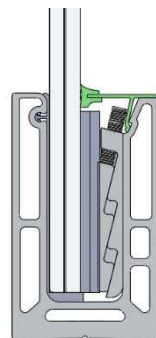
- 16.76mm glass, 6mm (3+3)
- 17.52mm glass, 5mm (3+2)
- 18.76mm glass, 4mm (2+2)
- 19mm glass, 3mm
- 20.76mm glass, 2mm
- 21.52mm glass, 1mm



5. Tighten the wedges using hex key



Max torque  
5 N/m



6. Connect cover plate and cover rubber together and attach them into the groove in the profile

**Removal of the glass and the adjustment wedge. Glass pane replacement.**

1. Remove carefully the cover plate with the rubber seal from the groove
2. Loosen all wedges by opening the Allen screws and moving the glass
3. Remove the plastics
4. Remove the glass remains (if broken)
5. Remove the wedges
6. Remove all the dirt from the wedges and the channel
7. Insert the new glass pane and follow installation steps 2 – 6

If you have any doubts on any stage of installation and/or on any product feature, please, don't hesitate to ask for advice from your professional distributor appointed by Steelpro. More info on our website

[www.steelpro.fi](http://www.steelpro.fi)